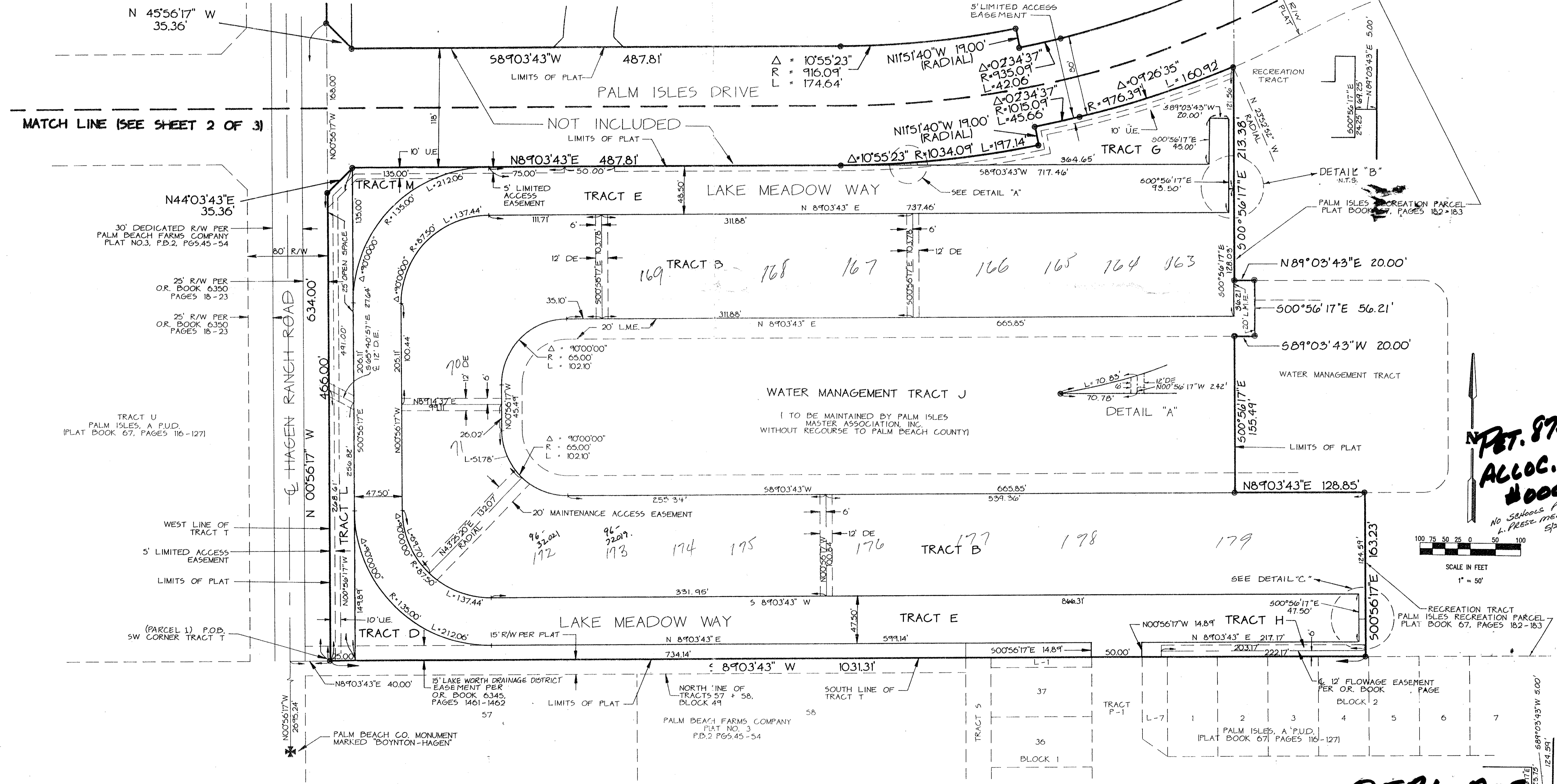
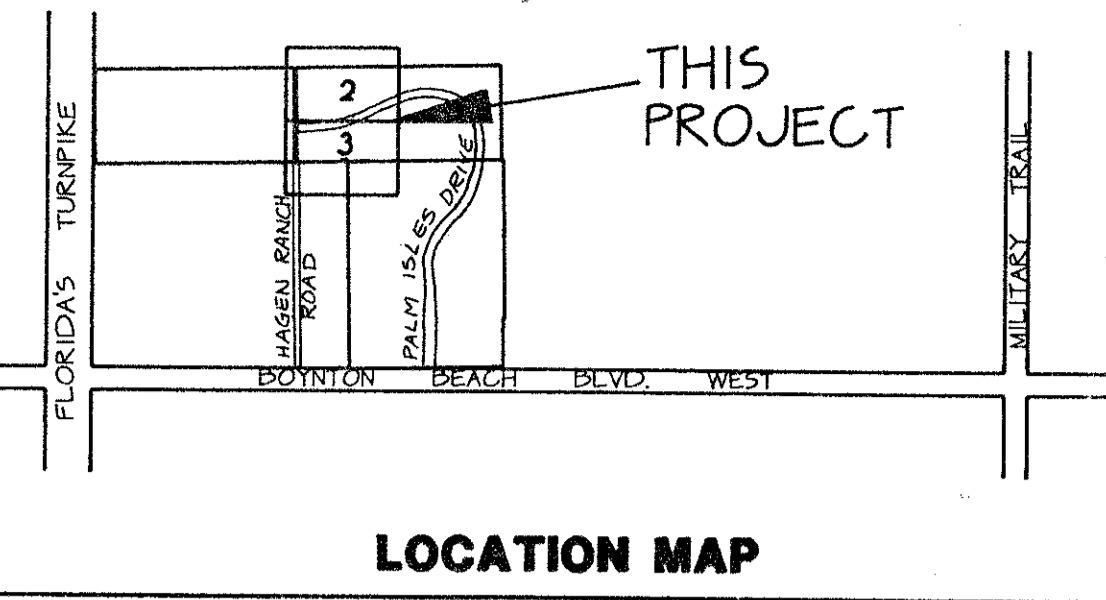


# PALM ISLES II-B, A P.U.D.

A REPLAT OF A PORTION OF TRACT T OF PALM ISLES, A P.U.D.  
AS RECORDED IN PLAT BOOK 67, PAGES 116 THROUGH 127 INCLUSIVE OF THE PUBLIC RECORDS OF PALM BEACH COUNTY, FLORIDA  
AND A REPLAT OF A PORTION OF PALM ISLES RECREATION PARCEL AS RECORDED IN PLAT BOOK 67, PAGES 182 AND 183 OF THE PUBLIC RECORDS  
OF PALM BEACH COUNTY, FLORIDA, ALL IN SECTION 21, TOWNSHIP 45 SOUTH, RANGE 42 EAST, PALM BEACH COUNTY, FLORIDA

THIS INSTRUMENT PREPARED BY JAMES E. PARK, P.L.S.  
WILLIAMS, HATFIELD & STONER, INC. - ENGINEERS PLANNERS SURVEYORS  
1325 SOUTH CONGRESS AVENUE, SUITE 118, BOYNTON BEACH, FLORIDA 33426

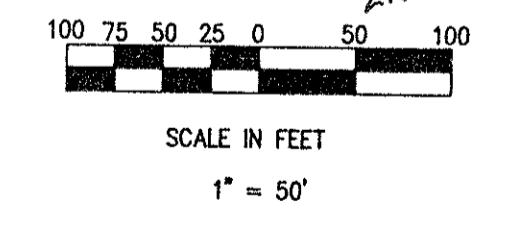
SHEET 3 OF 3



SUBDIVISION - PALM ISLES II-B  
BOOK TO PAGE 116  
FLOOD MAP # 185A  
QUAD # 50  
SE 87-912  
ZIP CODE 33437  
P.U.D. NAME SAME  
2/15/14

T&Z = 443

**NET. 87-92**  
**ALLOC.**  
**#0001**  
No Schools Per  
Pres. memo  
5/24/14



**PALM ISLES II-B**

**0571-005**  
**70/116**

DETAIL "C"